



EDGE
LIGHTING

COMET

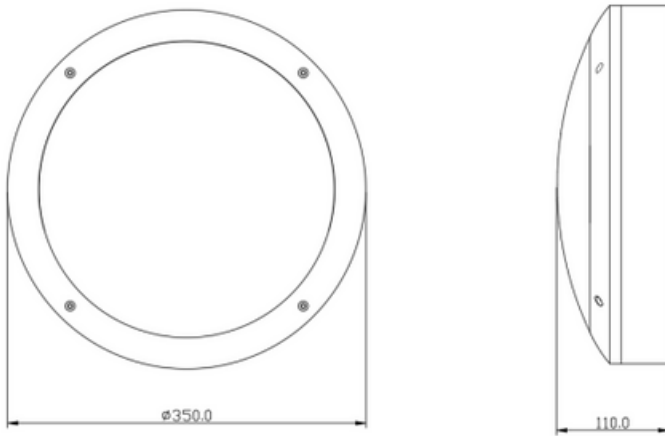
Comet is suitable for canopy or sheltered applications, either ceiling mounted to provide area lighting or wall mounted to provide uplight to the underside, due to its wide beam angle providing a daylight feel.



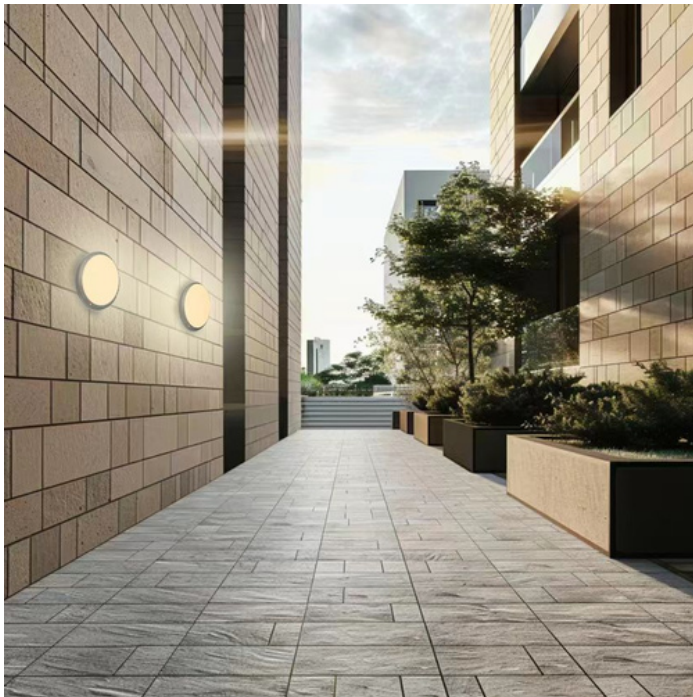
TECHNICAL INFORMATION

Installation	Surface Mounted (SM)
Body Colour	Black (B)
Dimensions	Ø350mm x 110mm
Lumen Output	1900lm (21W)
Colour Temperature	3000K or 4000K
Colour Rendering Index	CRI80
Optical Distribution	Opal Diffuser (OP)
Ingress Protection	IP65
Controls	Fixed Output (FO), DALI (DD) or Microwave (MW)
Emergency	3 Hour Emergency (EM3) or DALI Emergency (EMD)
Accessories	-

DIMENSIONS



PRODUCT SHOWCASE



PRODUCT CODE

CMT/SM/B/1900LM/3000K/80/OP/65/DD

Comet, surface mounted, black finish , 1900 lumens, 3000K, CRI80, opal diffuser, IP65 rated, DALI dimming

SPECIFICATIONS MAY BE ALTERED WITHOUT ADVANCE NOTICE.



Contact us for more information

☎ 020 8687 0190

✉ sales@edgelighting.co.uk



EDGE
LIGHTING

EDGELIGHTING.CO.UK